

Shadwell Court Wincanton, Somerset, BA9 9AQ



A light and bright modern first floor flat situated in this nicely central location. One large double bedroom with ensuite. Sitting room with plenty of room for a table. The kitchen is modern with fitted units. There is also double glazing and central heating. NO CHAIN.

Offers Over £120,000

This super freshly decorated first floor apartment is a 'must view'! Situated just off West Hill and within easy walking distance of the High Street this light and bright property is offered with no onward chain.

There is a communal door leading to the hallway and stairs to first floor. A second door leads into the flat where there is a hallway. To the rear is a surprisingly spacious double bedroom with a double-glazed window overlooking the rear. There is an ensuite bathroom.

To the front of the property is a light and bright sitting room and off this there is a modern fitted kitchen with a range of wall and base units and integral oven and hob. There is a wall mounted boiler supplying domestic hot water and central heating. There is a double-glazed window to the front.

Outside there is ample resident parking. This particular property occupies a position to the rear of the development with a pleasant outlook over a stream and wooded area. There is double glazing and gas central heating. NO CHAIN

- Tenure: Leasehold
- Lease Remaining: 961 years
- Annual Ground Rent: £0
- Ground Rent Review Period: N/A
- Annual Service Charge: £360.00
- Service Charge Review Period: Annual
- Council Tax Band: A
- Local Authority: Somerset Council
- EPC: C
- Utilities and Similar: Mains electricity, mains gas, mains water (metered), mains drainage, and telephone
- No Onward Chain



hunter french



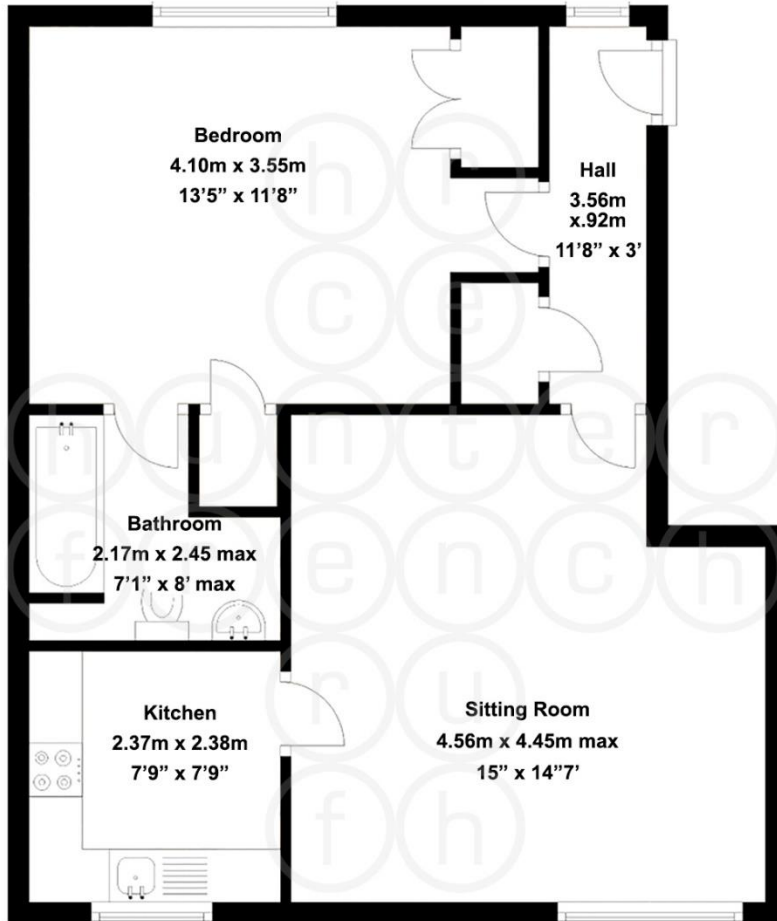
Bath Office
01225 444454
Devizes Office
01380 722784

Bruton Office
01749 684198
Frome Office
01373 464040

Castle Cary Office
01963 351182
Tetbury Office
01666 505086

Corsham Office
01249 715775
Wincanton Office
01963 31376

Shadwell Court, Wincanton, Somerset, BA9 9AQ



Approximate total floor area: 49 sq. m / 527 sq. ft

This plan produced for Hunter French is not to scale and is for illustrative purposes only. Whilst every attempt has been made to ensure the accuracy of the details and measurements depicted there is no guarantee as to their veracity and no responsibility is taken for error, omission or misrepresentation or any of the details shown. Where room dimensions are not square, the measurements depicted are of the maximum length or width of the room and this may be taken into account when estimating the total floor area of the building. The services, systems and appliances shown have not been tested and no guarantee as to their operability or efficiency can be given.

Important Notice

Hunter French, their clients, and any joint agents, give notice that:

1. They have no authority to make or give any representation or warranties in relation to the property. These particulars do not form part of any offer or contract and must not be relied upon statements or representations of fact.
2. Any areas, measurements, or distances are approximate. The text, photographs, and plans are for guidance only and are not necessarily comprehensive. It should not be assumed that the property has all necessary planning, building regulations, or other consents and Hunter French have not tested any services, equipment, or facilities. Purchasers must satisfy themselves by inspection or otherwise.

Bath Office
01225 444454

Bruton Office
01749 684198

Castle Cary Office
01963 351182

Corsham Office
01249 715775

Devizes Office
01380 722784

Frome Office
01373 464040

Tetbury Office
01666 505086

Wincanton Office
01963 31376